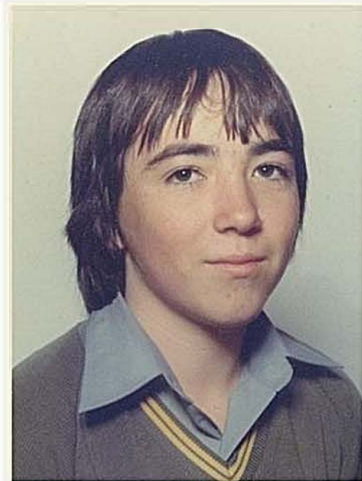


COLIN ELLIOTT

CLASS OF 1982



When Colin was young he wanted to be a Carpenter or a professional racing car driver!

WHAT HAS HE BEEN UP TO?

After completing his studies in 1982, Colin started work as a Trainee Civil Engineer with the State Electricity Commission of Victoria (SECV) in their Geomechanics laboratory. He completed his Certificate of Technology (Civil Engineering) in 1986. In 1988 Colin switched career paths and studied a Bachelor of Applied Science in Geology (RMIT) part time. In 1990 the SECV was privatised. Colin took a voluntary redundancy package and went back to full time study to complete this Degree. Once qualified as a Geologist Colin began working in the Gippsland coal industry as an Engineering Geologist.

In 1996 he moved back to Melbourne working on contamination remediation projects in all parts of Australia and New Zealand for GHD Pty Ltd . During this time, he became an Environmental Auditor (QSA) and completed a Master's Degree in Engineering (Project Management) at RMIT.

In 2005, he accepted a transfer as the Manager of Albury Wodonga Branch. This two-year contract lasted 12 years. During this time, he graduated as a Company Director from the Australian Institute of Company Directors. Since then, he has held numerous board positions in both the Private and Not-for-Profit sector, including several State and Federal Government Ministerial appointments.

WHERE IS HE NOW?

In 2017 he was appointed to the role of Principal for Property and Infrastructure Advisory at Spiire Australia P/L; where he works in the field of property development consulting; managing a large team of surveyors and engineers.

SOMETHING YOU MAY NOT KNOW ABOUT HIM

Colin didn't obtain his Higher School Certificate in 1982 (*failed English with a score of 49%*). However, during his career he has accrued three tertiary qualifications and now primarily writes reports for a living. Colin is proof that you should not let things like ATAR scores define your potential.

